



Co-funded by  
the European Union

**WAWW!**   
What A Wonderful World!

# InfoPack

## LTTA - Climate, Water and Forests

1 - 6 June 2024  
La Padure Pension,  
Brebu, CS  
Romania

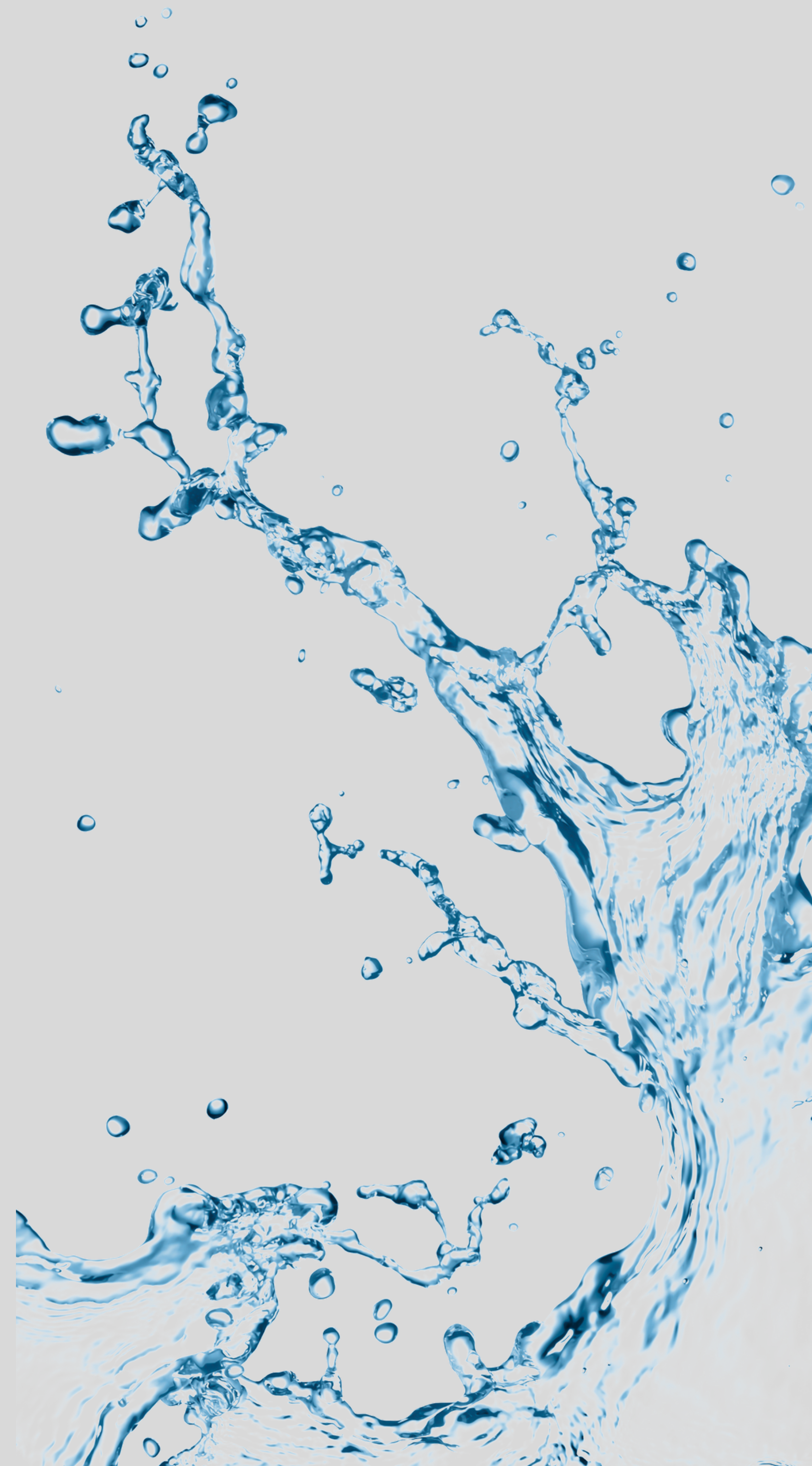
2023-1-AT01-KA220-40U-000157207



About the project:

What a Wonderful World! is an Erasmus+ strategic Partnership project that aims to develop ECO-LITERACY skills among young people from 6 partner countries, by carrying out studies to reduce the individual footprint of carbon, water waste and greenhouse gas emissions. The project objectives are:

- Reduction of carbon footprint and water waste of project participants by 50% after 2 years of implementation.
- Developing ECO-LITERACY skills among young people
- Creation of an ECO-LITERACY guide.
- Organizing conferences and awareness campaigns



## Aim of the LTTA:

To promote awareness of water footprints, the role of forests in climate change and water resource protection.



Participant's profile: From each country we expect a number of:

- 4 Young people from each partner country, volunteers, youth workers, team leaders aged 18 - 30 and
- one youth worker from the project Management Team (aged 18+)

Priority will be given to participants who face several disadvantages, such as: social, economical, geographical, cultural, health issues etc.

Each national partner is responsible for internal selection of participants, make sure to contact them for next steps.



## Accommodation:

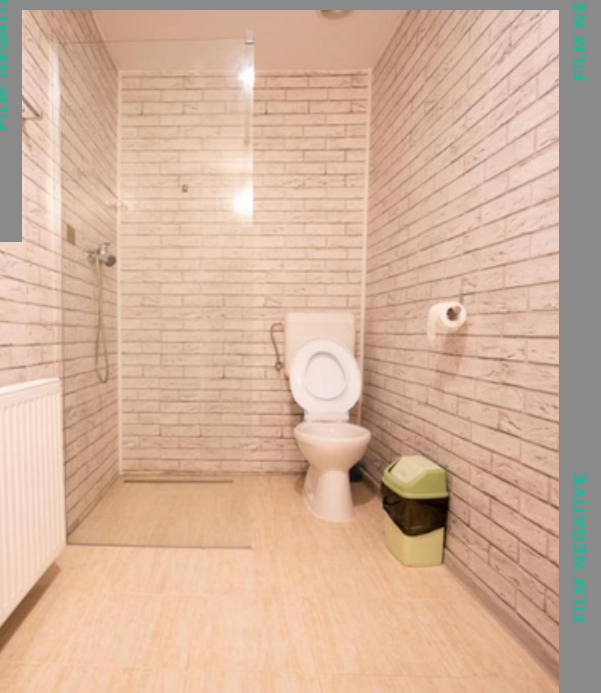
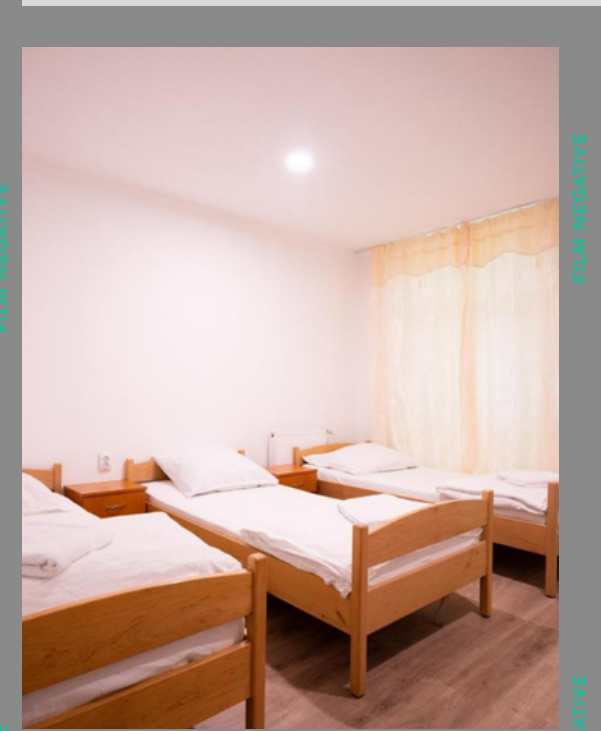
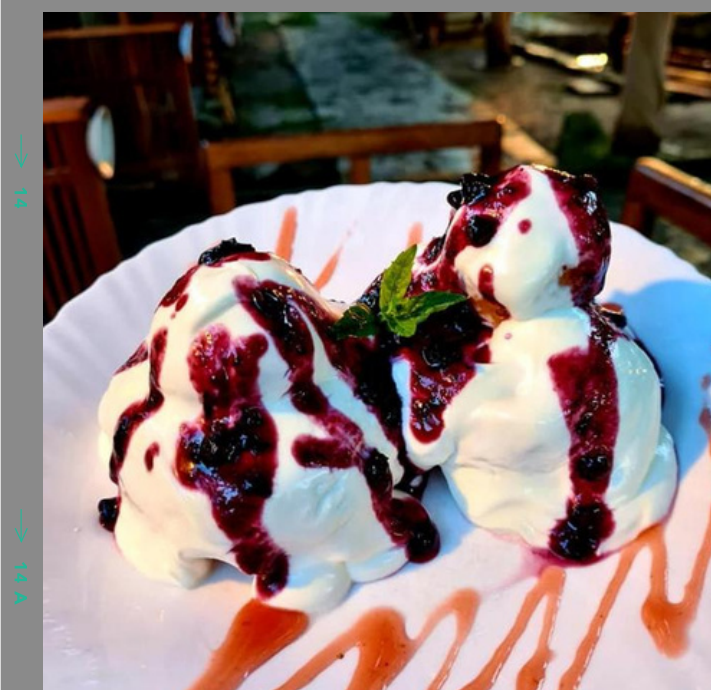
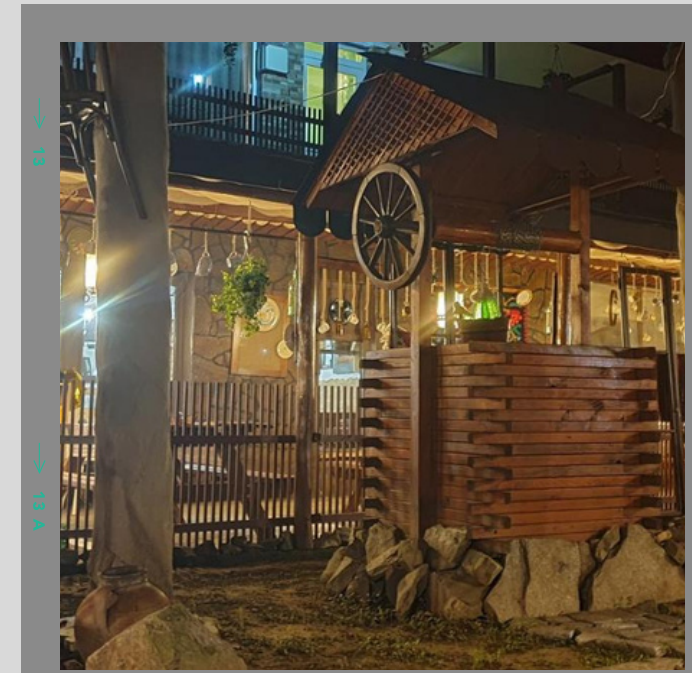
All participants will be accommodated in La Padure Pension in Brebu, CS, Romania in international rooms of 3 with own bathroom. Team leaders will be accommodated in separate rooms in the same premisses.

## Meals:

Participants will serve in the restaurant of the Pension 3 meals per day and 2 coffee breaks, respecting their dietary needs declared.

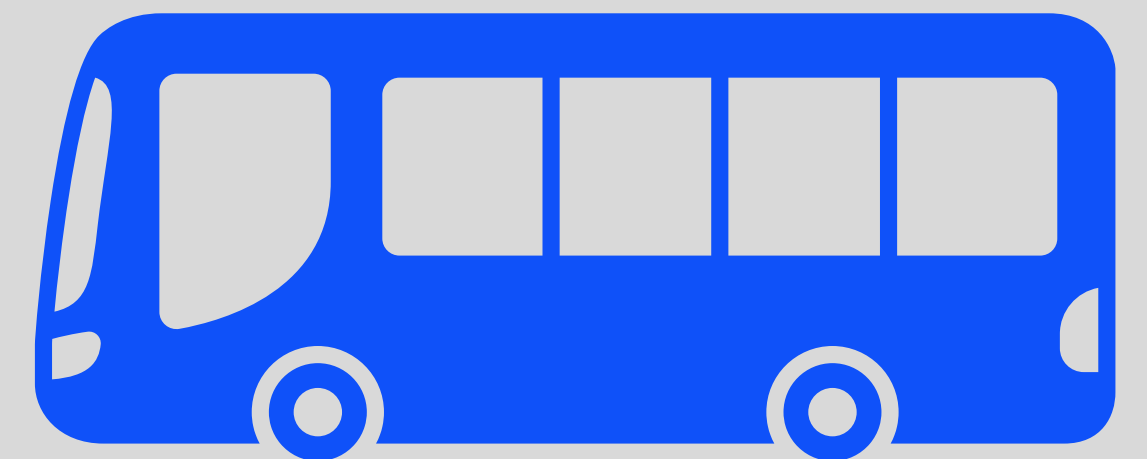
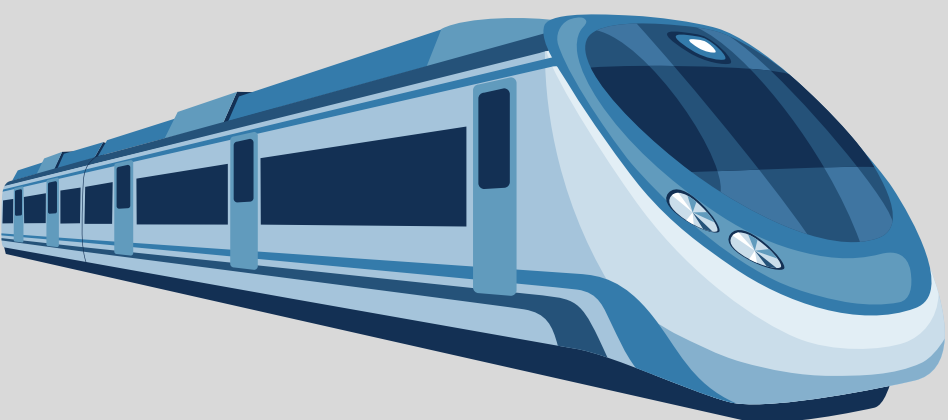
## Training Activity:

All indoor activities will be held in the Pension's Conference room and outdoor activities in the premisses of the pension and surrounding forests.



## How to get there?

- the nearest airport is Timisoara (TSR) - 125km away; from there you could either take a train to Caransebes or choose a private transfer to Brebu.
- the nearest Train Station is Caransebes - 22km away;
- If you travel via Bucharest (is 500km away), from there you should take a flight to Timisoara or a train to Caransebes. <https://www.cfrcalatori.ro/en/>
- If you travel via Budapest (400km away), from there you have trains and FlixBus to Timisoara quite often: you can check <https://www.mavcsoport.hu/en> and <https://www.flixbus.com/>
- If you travel via Belgrade (223 km away), there are some private companies which ensure transfers to Timisoara or directly to Brebu.
- If you will choose to travel with private company let us know and we will ask them to contact you and provide the prices for your travel in advance.
- FROM CARANSEBES we can organize group pick ups only so make sure you travel in groups.
- Regardless of your travel option, all team leaders should contact Nevo Parudimos to facilitate logistical aspects of the travel.
- The budget for transport is covered by each partner within the established limit based of 275 EUR/participant.



## Other information....

- 1st of June is arrival day and 6th is departure day. Make sure you choose your travel according to these dates and only after consulting with your sending organisation.
- Is recommended to travel in national groups for safety and logistical reasons;
- Each participant should have a health insurance (preferably European Health Insurance Card as it is free but if not possible, buy a private one covering also travel days);
- The LTTA (Learning Teaching Training Activity) is an educational programme, tourism will not be encouraged;
- Come prepared to discuss project topic and bring your own inputs;
- All sessions are mandatory and it is requested to actively participate during the sessions;
- We will organize an Intercultural evening where each participant will present its country, therefore come prepared with presentations and goodies from your country;
- Bring medicine you may need, comfortable shoes and proper clothing for indoor and outdoor activities, something to cover your head, sun lotion, mosquito protection, laptop (at least one per national group).
- There are no shops in the nearby, therefore is better to bring with you the things you will need in the first 2 days, afterwards we will go in Resita (the biggest city in the region).



Reșița is a mountain town of about 58.000 people located in the south western part of Romania. Three centuries ago, the first furnace was opened in the city. From then on Reșița became a major industrial center all the way until today. Reșița lays in the middle of Banat Mountains. Therefore, to live in Resita means having greenery and mountains in your sight at any time, while still enjoying the perks of urban life. Nevo Parudimos' office is in Resita, participants will have the opportunity to visit the city during a study visit activity.



# Contact:

- ZENTRUM FÜR INNOVATIVE BILDUNG – Austria (fethiye.aytac7@gmail.com)
- KARGENC ÇEVRE SPOR KULÜBÜ – Turkey (kargencclub@hotmail.com)
- HELLAS FOR US – Greece (ria@hellasforus.com)
- L'ORMA – Italy (worldwide@ormasite.it)
- NAVISSOS – Serbia (bgolubovic79@gmail.com)
- Nevo Parudimos – Romania (nevoparudimos@yahoo.com)

For urgent matters please contact Laura Minea, project manager in Nevo Parudimos Association: [lauraminea13@gmail.com](mailto:lauraminea13@gmail.com)

